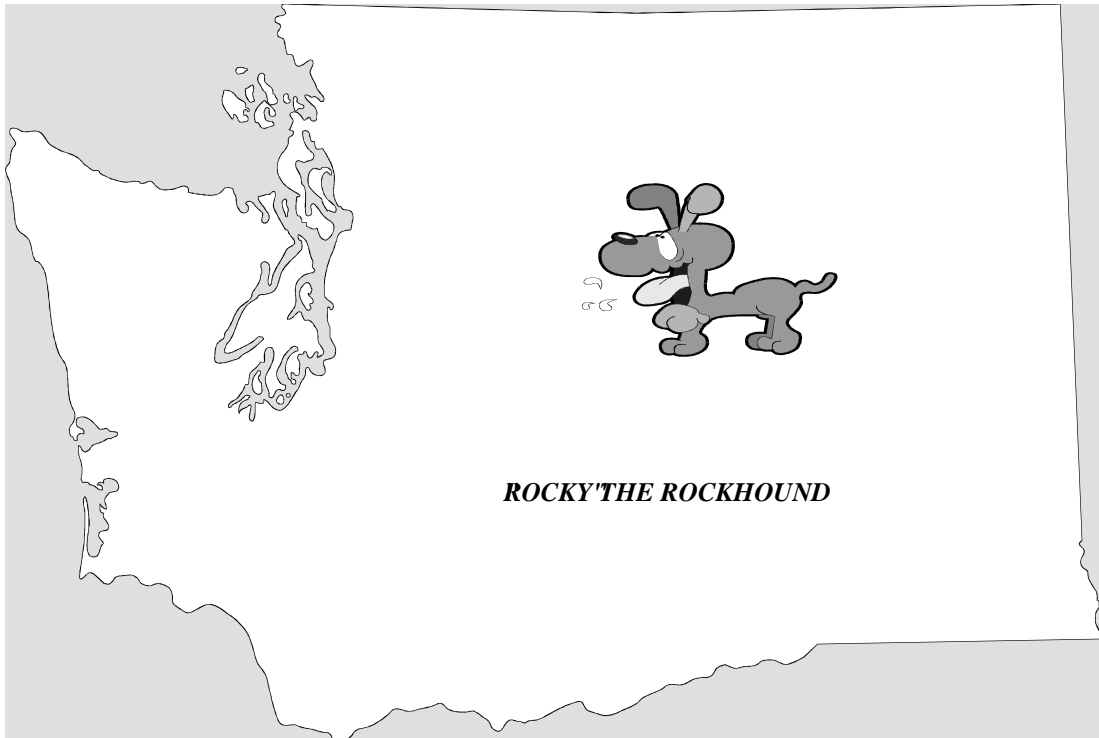

◆ **The Council Reporter** ◆

Volume 33, Issue 2

February 2013



**Official Publication of the
Washington State Mineral Council**

**WASHINGTON STATE MINERAL COUNCIL
2012 OFFICERS**

OFFICERS

President	Brian Waters	bwaterss2011@gmail.com	(206) 290-2312
VP	Michael Shaw	mikeshawmoose@yahoo.com	(509) 244-8542
2nd VP	Brad Johnson	cavemanrocks@yahoo.com	(206) 403-3073
Secretary	position open		
Treasurer	Kathy Earnst	earnstkk@comcast.net	(360) 856-0588
Imm Past Pres:	Andy Johnson	cbagates@hotmail.com	(509) 546-1950

TRUSTEES --- EAST SIDE

Steve Townsend	srtrocks@aol.com	(11-12-13)	(509)-933-2236
Howard Walter	1 S. 56th Ave, Yakima, WA 98908-3107	(12-13-14)	(509) 972-3437
Dale Geer	P.O. Box 34, Moxie, WA 98936	(12-13-14)	(509) 248-6975
Krisanne Gray	E. 1012 Indiana Ave., Spokane, WA 99207	(11-12-13)	(509) 701-3519
Timothy DeGrie	rockhound5555@yahoo.com	(10-11-12)	

TRUSTEES --- WEST SIDE

Ed Lehman	9120 20th St. SE, Lake Stevens, WA 98285	(10-11-12)	(425) 334-6282
Bill Moser	5130-142nd PL NE, Marysville, WA. 98271	(10-11-12)	(425)-238-8222
Stu Earnst	27871 Minkler Road Sedro Woolley, WA 98284	(12-13-14)	(360) 856-0588
Bob Pattie	4316 N. E. 10th, Renton, WA 98059	(12-13-14)	(425) 226-3154
Glenn Morita	4528 152nd Pl SW, Lynnwood, WA 98087	(11-12-13)	(425) 743-6249
Lisa Bishop Waters	lisa9905@msn.com	(11-12-13)	(206) 371-1810

STAFF

Editor	Glenn Morita	4528 152nd Pl SW, Lynnwood, WA 98087	(425) 743-6249
Historian	Jackie Pattie	4316 N. E. 10th, Renton, WA 98059	(425) 226-3154
Wagonmaster	open		

The West Side Board meets the third Tuesday of each month between Quarterly meetings, unless a meeting is specially called. Usually no meeting in July and December dependent on Board action.

MAILING ADDRESS

Washington State Mineral Council
27871 Minkler Road
Sedro Woolley, WA 98284

WEB PAGE ADDRESS

<http://www.mineralcouncil.org>
Editor's e-mail address
gmorita@seanet.com

Westside Board Meeting Minutes 02/19/13

Meeting opened at 7:30pm

There were not enough board members to hold a business meeting so we sat around the table and chatted. Ed Lehman provided a tentative list of the field trips for 2013.

Bob Pattie asked Ed Lehman to give an estimate of the size of each of 2012's field trips and the amount of material collected at each site. Bob wants to use this information to present to the State so that they have a feel for the impact of our field trips and the hobby in general.

Summary of 2012 Field Trip Participation and Material Collected

Site	# of People	Material	Total
Cedar Ponds	15	Agate	100#
Beaver Valley	20	Jasper/Geodes	50#
Saddle Mt	24	Petrified wood	480#
Diatom Pits	6	Common opal	120#
Racehorse Creek	35	Fossils in shale	1050#
Saddle Mt (Pow wow)	20	Petrified wood	400#
Gold Mt	16	Travertine	160#
Lk Wenatchee	24	Garnets	48#
Greenwater	30	Agate/Jasper	600#
Little Naches	20	Thundereggs	500#
Miller River	30	Ore/Jasper	600#/300#
Blanchard Hill	8	Stilpnomelane in Chert	400#
Teanaway	40	Thundereggs/Jasper	400#

Meeting adjourned at 8:45pm

Submitted by Glenn Morita, Secretary Pro-Tem

FEBRUARY BIRTHSTONE – AMETHYST

The word amethyst comes from the Greek word "amethystos" meaning "not drunk," and was believed to prevent its wearers from intoxication. Excerpts from two articles about amethysts are below and on page 4. Follow the internet links provided for more information.

Amethyst – All About The Purple Gemstone By Gemstone Guru (<http://gemstoneguru.com/>)

Amethysts are a purple variety of quartz. The coloring is thought to be the result of natural impurities (most likely to be iron and some trace elements). Given that Quartz is probably one of the most plentiful minerals on Earth, Amethysts, one of the most precious forms of Quartz are widely available. Large pieces with great clarity are rela-

March 30, 2013 Combined Board Meeting AGENDA

Pres. Opening of Meeting
Treasurer's Report
◇ Kathy Earnst
Committee Reports
◇ Wagonmaster
Old Business
New Business
Open Comments
Adjourn

Tentative Meeting Calendar for 2013

West side board meetings:
1/15, 2/19, 4/16, 6/18, 10/15

At 7:30PM at the
Maplewood Clubhouse
8802 196th St SW, Edmonds

General meetings :
3/30, 5/4, 9/21, 11/2

All general meetings will be held at:

Palace Café
4th & Main
Ellensburg
Meeting @ 9:30 AM

tively easy to find and make for excellent cost effective additions to your gemstone collection.

A variety of hues are available, from light purple with a pinkish glow, through to deep purple. Whilst tastes in color do vary over time, usually the deeper and more intense purple stones are considered the most valuable. The finest stones display a deep purple color with flashes of red in incandescent light.

Heat treatment is often applied to Amethysts to intensify and deepen their purple hue, with imitations and synthetics also present in the market place. Given that sometimes the cost of testing can exceed the price of the gemstone, care should be taken to buy from reputed dealers and have larger stones tested by an independent gem Laboratory

On the whole, most Amethysts have quite poor clarity,

(Continued on page 4)

(Continued from page 3)

with clouding from intrusions or strong bands of other minerals. This may detract from their value, but a notable and unique piece can still be crafted with the right choice of stone and precision of cut. However, as a common gemstone, it is fairly easy to find large pieces with near-perfect clarity. As such, you should avoid stones with visible inclusions even if you are operating on a smaller budget.

Gem Specifics:

Specific Gravity: 2.63 – 2.65 (this is variable in impure varieties)

Chemical Composition: Silicon dioxide, SiO₂ with iron impurities, Fe⁴⁺

Refractive Index: 1.54 – 1.55

Hardness: 7

Popular Cuts

As the Amethyst is a common gemstone, you will find it in a wide variety of cuts. Princess and Emerald cuts are two of the most popular for Amethysts, but any cut that shows off the gem's unique properties and emphasizes its clarity is worthwhile.

A well-cut Amethyst is truly beautiful and dazzling. It will be sparkling, well-polished, and incredibly bright as Amethyst reflects a lot of light. A good cut will be symmetrical with angles meeting perfectly together, and the facets will be well-polished and smooth.

Unique pieces are often made from this gemstone to capitalize on individual faults and create "character" pieces. Depending on the craftsmanship, some of these are very beautiful, while others are not such a hit. A poorly cut Amethyst will contain uneven angles, dull luster, and strange shapes. Given that it can take several hours to achieve a good cut, the cost of labor can sometimes make a well cut Amethyst expensive.



Uses, History & Mythology

In crystal healing, Amethysts are an incredibly useful gemstone as they are said to focus psychic energy. In connection with the Greek myth, they are said to protect against drunkenness, fear and guilt. Physically, wearing Amethyst can supposedly heal respiratory and circulatory problems,

relieve headaches, help to break addictions, and advances spirituality.

Whatever your motivation, be it spirit or style, Amethysts are truly a worthy addition to any gemstone or gemstone jewelry collection.



More about Amethysts:

Geographic distribution

Amethyst is produced in abundance from the state of [Minas Gerais in Brazil](#) where it occurs in large [geodes](#) within [volcanic rocks](#). Many of the hollow agates of southwestern [Brazil](#) and [Uruguay](#) contain a crop of amethyst crystals in the interior.

Amethyst occurs at many localities in the [United States](#).^[11] Among these may be mentioned: the [Mazatzal Mountain](#) region in [Gila](#) and [Maricopa Counties, Arizona](#); [Red Feather Lakes](#), near Ft Collins, Colorado; [Amethyst Mountain, Texas](#); [Yellowstone National Park](#); [Delaware County, Pennsylvania](#); [Haywood County, North Carolina](#); [Deer Hill](#) and [Stow](#),

(Continued on page 5)

(Continued from page 4)

Maine and in the Lake Superior region of Minnesota, Wisconsin, Michigan, and Ontario in Canada.

Amethyst is relatively common in Ontario, and in various locations throughout Nova Scotia. The largest amethyst mine in North America is located in Thunder Bay, Ontario.

Information and amethyst photos courtesy Wikipedia: <http://en.wikipedia.org/wiki/Amethyst>

Via Petrified Digest 02/13

Dioptase - Mineral Of The Month

by Dave Jacobson

This month we are featuring the mineral diopase, hydrated copper silicate, $\text{CuSiO}_3 \cdot \text{H}_2\text{O}$. It is a silicate mineral, subclass cyclosilicates. Dioptase is one of my favorite copper minerals due to the beautiful green color of the crystals. Dioptase is found in the oxidation zone of copper deposits and in cavities in the rock associated with those deposits. It is a minor ore of copper. But it is primarily used as a mineral specimen. Some associated minerals are dolomite, calcite, cerussite, limonite, chrysocolla and other copper minerals. Noted specimens have been found in Tsumeb, Namibia and Zaire in Africa. In the USA it is found in California and Arizona. Other noted locations in the world are in Chile and Russia.



Dioptase is in the hexagonal crystal system. Typically it is found in stubby, prismatic, bright emerald green crystals with rhombohedral terminations. It also is found as a crust and in massive forms. Crystals are transparent to

translucent with a vitreous luster. Color is dark green. Streak is a pale greenish blue. It is brittle with a conchoidal fracture. Specific Gravity is 3.3 to 3.4. Hardness is 5 which is harder than most copper minerals. It is soluble in hydrochloric acid, staining the solution blue.

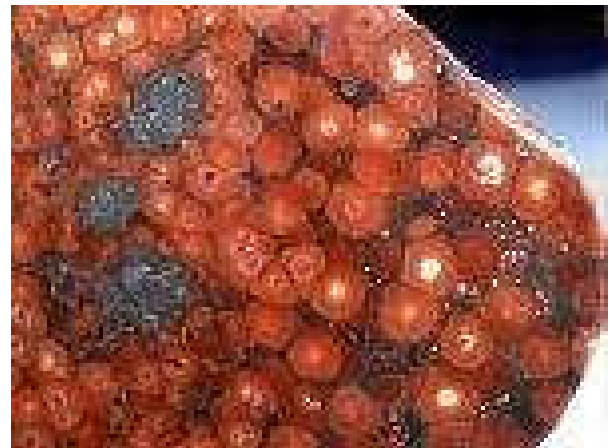
Dioptase takes its name from the Greek dia and optazein meaning "to see through".

I used the following reference materials in preparing this article. Field Guide To Rocks And Minerals by Frederick H. Pough.

Mineralogy For Amateurs by John Sinkankas. Simon & Schuster's Guide to Rocks And Minerals. The Audubon Society Field Guide

To North American Rocks and Minerals. Amethyst Galleries Mineral Gallery on the internet (<http://mineral.galleries.com>).

via CMS eTumbler 02/13, The Quarry, 12/12; from Canaveral Moonstone, 10/12



February Rock of the Month Orbicular Jasper!

Presented by John Wolfe.

Orbicular jasper is a mixed quartz rock. Western Washington orbicular jasper is concentrated in pillow lava west of Lake Crescent. The lava in this location is rich in manganese coloring the matrix a dark green or black with the red jasper growing as an orb around a quartz crystal.

Weathered rock has made its way down the Sol Duc and Quillayute Rivers to Rialto Beach by La Push where it can be found as pebbles.

(Continued on page 6)

TENTATIVE LIST OF WSMC FIELD TRIPS FOR 2013

The WSMC sponsors field trips through various rock clubs in the state. These trips offer the general public as well as the experienced rockhound the opportunity to collect a wide variety of materials from agate and jasper to crystals and fossils. Experienced guides familiar with the sites are on-hand to help find good quality material. Check with the local clubs in your area for further information. **AREAS CURRENTLY CLOSED TO COLLECTING: LUCAS CREEK, ADNA, DIATOM PITS (FRENCHMAN HILLS).** No motorized vehicles allowed: Green Mountain (Kalama) and First Creek.

Check out the trip info, and tool listings at: mineralcouncil.org.

Updated: January 17, 2013

Date	Host	Site	Meet @	Material	Tools
1/26	Msvl	Bvr Vily Quarry	10:30@	Pt Ludlow C of Comm (93 Beaver Valley Rd)	Chert, Zeolites, Geodes Hard rock tools
2/16	Msvl	Cedar Ponds	9:00 @	Monroe, WA Jack 'n Box	Red & Yellow Jasper Dig & light hard rock
3/23	Msvl	Sadl Mtn/Dtm Pts	9:00 @	Mattawa, WA-Harvest Foods	Pet. Wood & Diat. opal Light & dig tools
4/13	Msvl	Racehorse Crk	9:00 @	Nugent's Corner, E of Bellingham	Fossils; Morel mushrooms Dig, light, & split tools
4/20-21	Pow-Wow	Saddle Mtn	8:00 @	Boat launch: S. Mattawa	Petr. Wood Light hard rock & dig tools
5/18	Msvl	Walker Valley	9:00 @	Big Lk Store	Geodes Hard rock tools (lots of energy)
6/22	Msvl	Not decided, maybe	Mt Higgins or Pilchuck Ck		Rhodonite, Jade, Grossular Garnet
6/26-30	Pow-Wow	Madras, OR	8:00 @	Jefferson Fair Grounds	Agate, jasper, wood, T-eggs(\$) Dig & light tools
7/20	Msvl/Dar	Darrington	10:00@	Rock Show behind IGA Store	Travertine & Spelunking Hard rock dig, dress for water
7/27	Msvl	Lk Wenatchee	9:00 @	Coles Corner Gas Station	Garnets, actinolite, talc Screen, wood saw, dig tools
8/17	Msvl	Greenwater	9:00 @	Enumclaw Ranger Station	Agate, Jasper Dig & light hard rock
9/7-8	Pow-Wow	Red Top	8:00 @	W Fork Teanaway Camp	Geodes, Agate, jade Dig & light hard rock
9/14	Msvl	Little Naches	9:00 @	410 & FR 19	Thunder eggs, Rhyolite Dig & light hard rock
10/19	Msvl	Money Creek	9:00 @	Hwy 2, Money Crk Campground	Picture Jasper Rock Hammer & Container
11/16	Msvl	Blanchard Hill	9:00 @	I-5 exit 240, Gas Mart	Stilpnomelane in Quartz Hard rock tools

(* Deposit must be received no later than 30 days before trip date to reserve spot; deposit fully refundable.) Participants must be age 16 or older; no children or pets, please; maximum of 40 participants so get your reservations in early!)

ALWAYS CALL TO CONFIRM TRIP DATES AND DETAILS!!— SEE BELOW

Abbreviation	Host	Contact	E-mail
Evt	Everett Rock & Gem Club	Brad Johnson (206) 403-3073	cavemanrocks@yahoo.com
LkSd	Lakeside Gem & Min Club	Andy Johnson (509) 546-1950	cbagates@hotmail.com
Msvl	Marysville Rock Club	Ed Lehman (425) 334-6282	wsmced@hotmail.com
Msvl-Wasco trip		Stu & Kathy Earnst (360) 856-0588 27871 Minkler Rd, Sedro Woolley, WA 98284	earnstkk@comcast.net
MtBk	Mt Baker Rock Club	Kris Menger (360) 927-0994	kmenger@comcast.net
Nw Op	NW Opal Association	Tony Johnson (253) 863-9238	nyotbandit@earthlink.net
Pow-Wow	All Rockhounds Club	Cliff Matteson (253) 475-8433	cliff.conniematteson@gmail.com
Spkn	Rock Rollers of Spokane	Mike Shaw (509) 251-1574	mikeshawmoose@yahoo.com
WSea	West Seattle Rock & Gem Club	Brian Waters (206) 290-2312	bwaters2011@gmail.com
Yak	Yakima Rock & Min Club	Jerry Wichstrom (509) 653-2787	jewtmew@aol.com

Trips are open to all. Most 2 day trips include Sat potluck, Sun free breakfast, tailgating, swap, and horse shoes. Small fee required for Pow Wow and Madras trips. **FOR MORE INFORMATION** contact Ed Lehman at wsmced@hotmail.com or (425) 334-6282. Or see mineralcouncil.org

(Continued from page 5)

Orbicular jasper from the Olympic Peninsula.



Via Maplewood Rock and Gem Club News 02/13

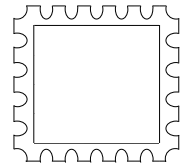
Local Area Shows for 2012/2013

March 2013 2nd 10am - 6pm 3rd 10am - 5pm	East KingCo Club	Annual Rock and Gem Show	Pickering Barn 1730 10th Ave NW Issaquah, WA
March 2013 2nd 9am - 6pm 3rd 9am - 5pm	Owyhee Gem & Mineral Society	59th Annual Rock & Gem Show	O'Conner Field House Canyon Co. Fairgrounds 2200 Blaine Caldwell, Idaho
March 2013 8th 10am - 6pm 9th 10am - 6pm 10th 10am - 6pm	Tualatin Valley Gem Club	Annual Show	Washington County FairPlex 873 NE 34th Ave. Hillsboro, OR.
March 2013 9th 9am - 5pm 10th 10am - 4pm	Rock & Arrowhead Club	27th Annual Show "Crystals" \$1.00 Donation Children Free	Klamath County Fairgrounds 3531 S. 6th St. Klamath Fall, OR. 97603
March 2013 9th 9am - 5pm 10th 9am - 5pm	Magic Valley Gem Club	62nd Annual Show	Twin Falls Co., Fairgrounds 215 Fair Ave., Filer, ID
March 2013 16th 10am—5pm 17th 10am—5pm	North Seattle Lapidary And Mineral Club	59th Annual show	Lake City Community Center 12531 28th Ave. NE, Seattle
March 2013 22nd 10am - 5pm 23rd 10am - 5pm 24th 10am - 4pm	Mt Hood Rock Club	Annual show	Kliever National Guard Armory 10000 NE 33rd Dr. Portland, OR
March 2013 23rd 9am - 6pm 24th 10am - 5pm	City of Port Angeles	Annual show	Vern Burton Community Center 308 E. 4th St. Port Angeles, WA
March 2013 29th 8:30am - 6pm 30th 9am - 5pm	Panorama Gem & Mineral Club		Ag Trade Center NE Washington Fairgrounds 317 W. Astor Ave. (at Washington St.) Colville, WA
March 2013 30th 10am - 6pm 31st 10am - 5pm	Sweet Home Rock & Mineral Society	65th Annual Rock & Mineral Show	Sweet Home High School Activity Gym handicap parking 1641 Long St. Sweet Home, OR
March 2013 30th 10am - 6pm 31st 10am - 5pm	Mt. Baker Rock & Gem Club	52nd Rock and Gem Show	Bloedel-Donovan Park 2214 Electric Ave. Bellingham WA
April 2013 6th 10am—6pm 7th 10am—5pm	SE Idaho Gem and Mineral Club	56th Annual show	Bannock County Fairgrounds 10588 Ifft Rd Pocatello, ID
APRIL 2013 13th 9am - 6pm 14th 10am - 5pm	Helena Mineral Society	Annual show	Helena Civic Center corner of Neill Ave. and Park Ave. Helena, MT
APRIL 2013 13th. 10am - 6pm 14th. 10am - 5pm	Idaho Falls Gem & Mineral Society	48th ANNUAL Gem & Mineral SHOW Adults - \$2.00 Children under 12 - free	Idaho Falls Recreation Center Memorial & B Street Idaho Falls, Idaho

Combined Board Meeting
March 30, 2013
9:30 AM

Palace Café
4th & Main
Ellensburg

COUNCIL REPORTER, Monthly publication of The
Washington State Mineral Council



WASHINGTON STATE MINERAL COUNCIL
27871 Minkler Road
Sedro Woolley, WA. 98284

